

Inside Outside

THE INDIAN DESIGN MAGAZINE

www.insideoutside.in

ISSUE 352

NOVEMBER 2014

₹100

FEATURING

S A K Designs

Madhuri and Sagar Zite

Jibu John • Arthur Casas

Nupur Madhav • Ishwar Gehi

And an Indian home in Vietnam

COVER STORY

Architect Rakeshh Jeswaani designs a duplex apartment in South Mumbai.

Swanky Style

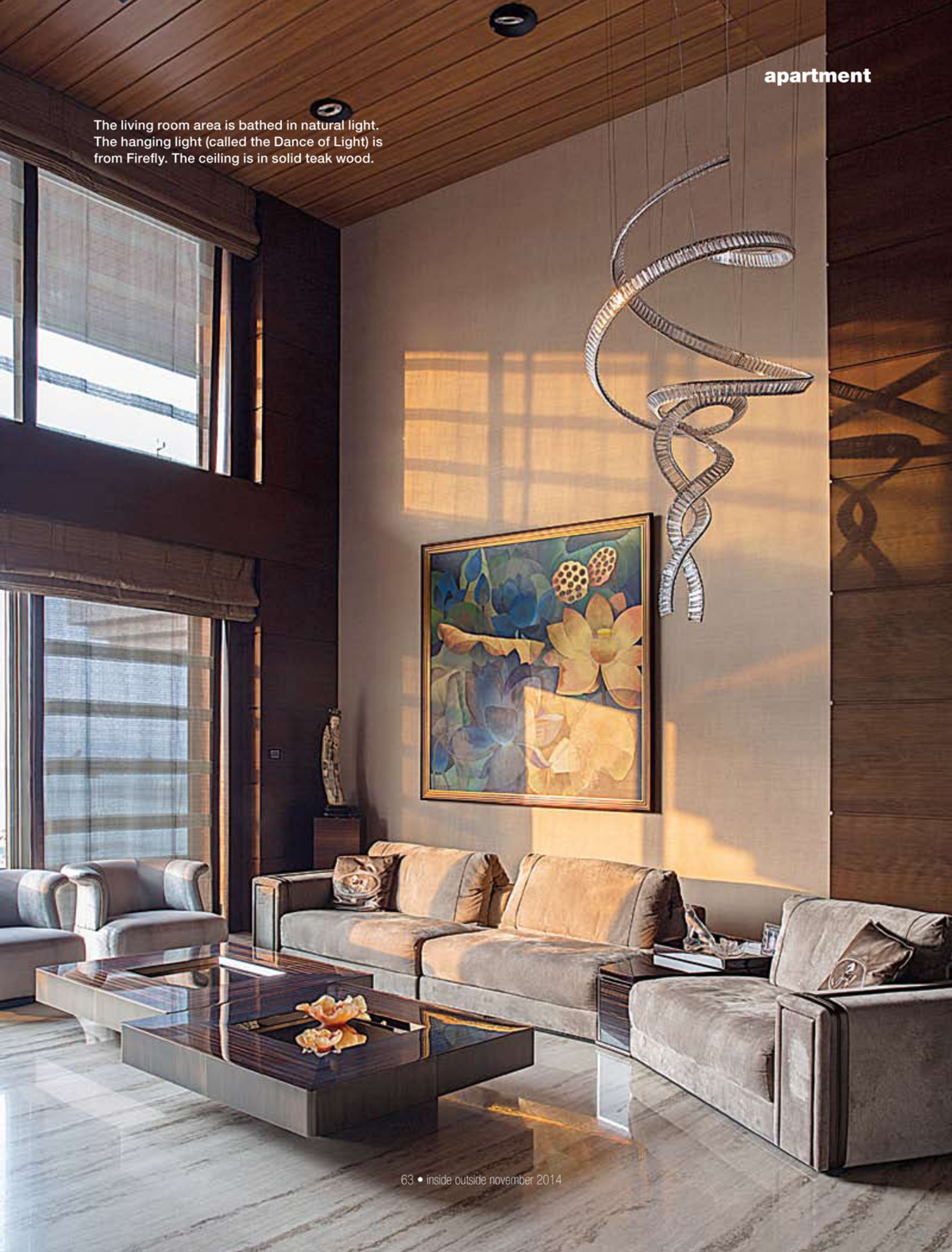
Rakesh Jeswaani of Rakesh Jeswaani Interior Architects has designed a sprawling, 6,000 sq ft duplex apartment in a high rise building in the plush South Mumbai area, using a contemporary idiom and plenty of wood to infuse a warm feel.

TEXT: KANUPRIYA GARG
PHOTOGRAPHS: PANKAJ ANAND,
COURTESY THE DESIGNER

Rakesh Jeswaani believes in client interaction and making sure his clients are comfortable in the space they live in. That's exactly what he has achieved in this swanky duplex, surrounded by lovely views of Mumbai.



The living room area is bathed in natural light. The hanging light (called the Dance of Light) is from Firefly. The ceiling is in solid teak wood.





A Tavertino Moka marble staircase with scattered flower inlay takes us to the upper floor. The railing of the staircase is done in rectangles of clear bevelled glass with a random pattern of vertical bevelled strips.

The client brief included crafting a rich space and maintaining the openness of the apartment to maximise the fabulous views. The apartment is home to four generations and the comfort and requirements of each one was a priority. The allocation of the rooms has also been equally carefully done to ensure privacy.

'My work has a fair bit of detailing. The clients were very sure of the kind of materials they wanted to use in the apartment. As a result, we went to Italy and sourced the marble and furniture from there first, and then designed the spaces around them. The furniture in the duplex is mostly procured from various Italian brands and rich Italian marble is used for the flooring.'



The living room has been kept simple and neutral, yet the overall impression is one of stylishness. An offset wall with a painting by Srilankan artist Senaka Senanayake completes the decor.



A sliding door demarcates the passage from the dining room. The ceiling here is of teak with a two-tone polish.



The dining space stands out from the rest of the area with its black marble and silver detailing. The set of 15 paintings breaks the monotony of the black and silver colour scheme.



The master bedroom is a warm space, with headboard in beige woven fabric and taupe leather



The lower floor comprises the entrance lobby, kitchen, formal living, family and dining rooms, a powder room, two master bedrooms and a mandir. The entrance is stylish and beautified by wall mirrors from Natuzzi and flooring in silver beige Travertino marble. A sliding door in bevelled rectangles of smoked and clear glass demarcates the passage from the dining room. The ceiling here is clad in solid teak wood in a light, two-tone polish.

The dining space stands out from the rest of the area with its black marble and silver detailing. The dining table and chairs from Visionnaire Ipe Cavalli and a black glass table top with a silver



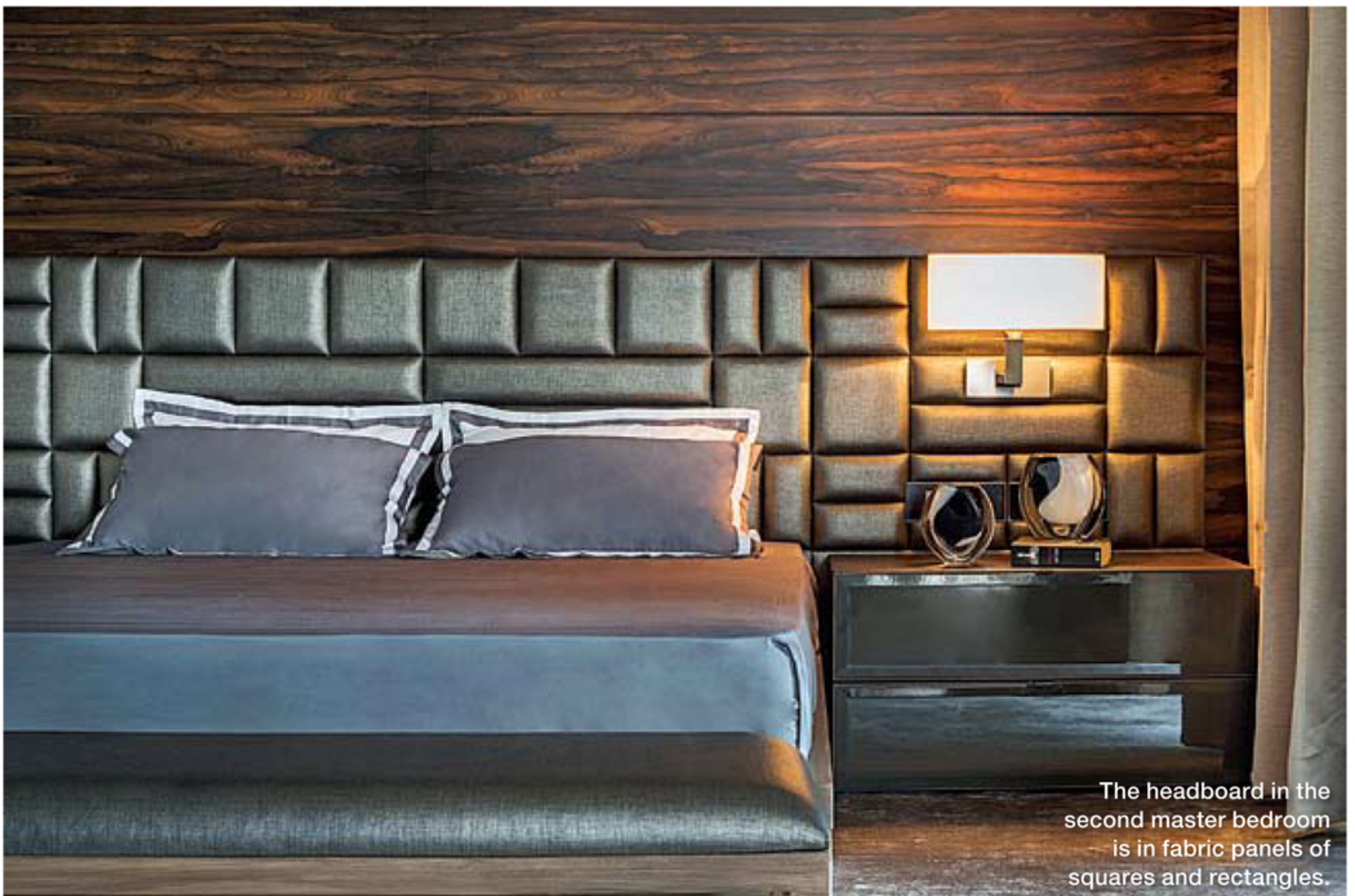
A double-height ceiling distinguishes the living space.

metallic border add a touch of bling here. The chairs are in fabric with a shoe lace tie-up detail on the back. A set of 15 paintings by artist Seema Kohli from Tao Art Gallery, Mumbai break the monotony of the space.

The formal living space has a double-height ceiling, enhancing the openness of the space. The double-height wall has been kept bare and clad in wallpaper for easy maintenance. An offset wall with a painting by Srilankan artist Senaka Senanayake completes the space. A Fendi sofa and lounge chairs are placed aptly in the living space and the hanging 'Dance of Light' from Firefly Lighting Pvt Ltd immediately grabs attention.



Care has been taken that the bedrooms suit the personality of the occupants.



The headboard in the second master bedroom is in fabric panels of squares and rectangles.



The mother's room has an ornate jaali work pattern.



In the den on the upper wall, a duct wall clad in squares of Ventino Scooped white marble from 'Stone Source', forms an interesting element.

The family room (den) is a casual space for entertaining friends and guests. The flooring here is in wood finished ceramic tiles. Sliding wooden panels behind the sofa with petal-shaped clear bevelled glass inserts can be opened to create a larger space in front of the mandir for family pujas.

The master bedroom is a warm space, with head-board in beige woven fabric and taupe leather. The bed with storage and a chest of drawers with a fluted wood detailing finished in silver leaf were made on site. The master bathroom is accessed through an open dressing area. Two bevelled

FACT FILE

DESIGNER

Rakeshh Jeswaani Interior Architects

PROJECT

A 6,000 sq ft apartment in a Mumbai high rise

COMPLETION DATE

17th August 2014

GENERAL NOTES

All the marble is from Antolini (Italy), bought from Stone Source

All veneers are from Deluxe Veneers

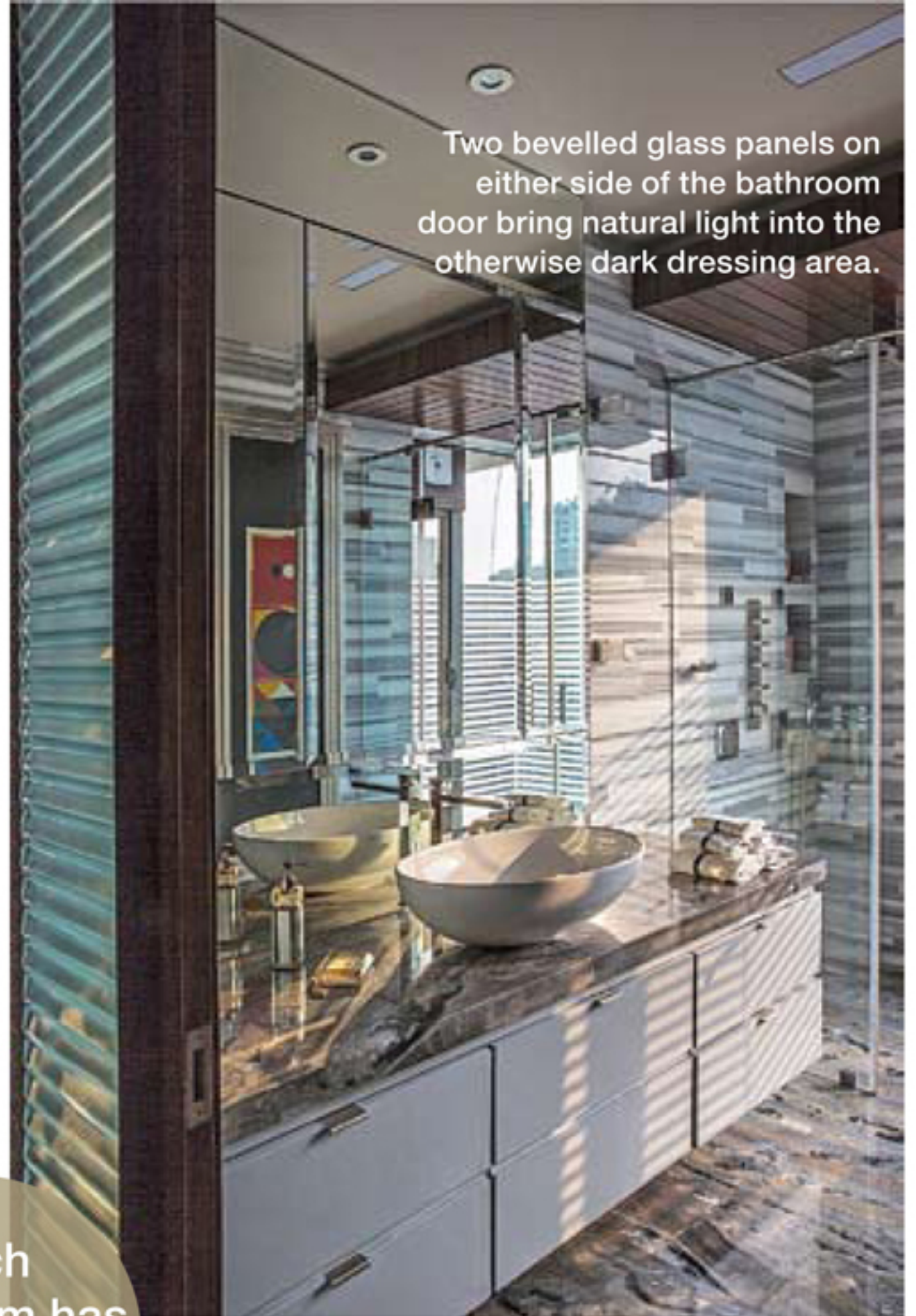
Curtain fabric is from Atmosphere, Surprise & Bharat Furnishings

All lights are from Firefly Lighting Pvt Ltd

All rugs are from 'Hands' – Carpets & Rugs, Mumbai

glass panels on either side of the bathroom door bring natural light into the otherwise dark dressing area. The mother's room has a unique storage shutter in the form of a framed Raza print from India Art.

A Tavertino Moka marble staircase with scattered flower inlay takes us to the upper floor. The railing of the staircase is done in rectangles of clear bevelled glass with a random pattern of vertical bevelled strips. The second master bedroom, children's room, another den, the children's study and play area lie on the upper floor. The décor on the upper floor is more youthful



Two bevelled glass panels on either side of the bathroom door bring natural light into the otherwise dark dressing area.

Each bathroom has its own style and features.



The children's bathroom has leaf-shaped bevelled mirrors made on site.



The floor-standing wash basin above was made on-site.

The vibrant colours of the girls' room are complemented by the beautiful hanging light.



and vibrant as compared to the one on the lower floor.

The master bedroom is a simple space with an accent wall in Zericote veneer forming the highlight of the room. The headboard is crafted in fabric panels of squares and rectangles. A corner flanked with a sound chair from Natuzzi Italy in light bronze leather is perfect for relaxing.

We then move on to the den where a duct wall clad in squares of Ventino Scooped white marble from 'Stone Source', forms an interesting element. There is a small counter which can be used as a desk as well as the bar area. Solid wood Detroit flooring adds to the warm feeling.

The girls' room has a vibrant colour palette and a beautiful hanging accent light forming the central focus point in this charming space.

The spaces have been kept neutral and simple for the clients to accessorise and play with the colours of the upholstery and curtains. 'Initially, we felt we were going overboard so the challenge was to tone down the design a bit,' says Rakesh. 'It's fascinating to see how different people want distinct spaces and how I can use my vision to turn their dreams into reality.' 